



AUCTION

LEADING THE INDUSTRY SINCE 1945

Thursday – June 22, 2017 – 5:00 PM
Real Estate Sells At 5:30 PM

Brick Home On 1.4 Acres **WITH 24X24 GARAGE/SHOP**

Also Selling: Like-New 2015 Kia Optima – Mower – Tiller – Tools – Furniture
Glassware – Stark County – Lexington Twp. – Marlinton Schools

ABSOLUTE AUCTION, All sells to the highest bidder(s) on location:

13637 Maryland Ave. NE, Alliance, OH 44601

Directions: Take OH-183 south of Limaville to Burden Rd. NE and go right, then left on Florida, and right on Maryland Ave. NE.
Or from OH-619 take Florida Ave. north to Maryland and left to auction. Watch for KIKO signs.



Information is believed to be accurate but not guaranteed.



330.455.9357 • kikoauctions.com





KIKO AUCTIONEERS

2722 Fulton Dr. NW, Canton, OH 44718

kikoauctions.com

Thursday – June 22, 2017 – 5:00 PM
Real Estate Sells At 5:30 PM

BRICK HOME ON 1.4 ACRES
WITH 24X24 GARAGE/SHOP

Also Selling: Like-New 2015 Kia Optima
Mower – Tiller – Tools – Furniture
Glassware – Stark County – Lexington Twp.
Marlington Schools

13637 Maryland Ave. NE, Alliance, OH 44601



Members – State and National Auctioneers Association



Nice country setting with brick home situated on 1.4 acres with detached 24'x24' garage/shop building. Home features 1,764 sq. ft. of living area w/ open concept kitchen, dining room, living room, 3 bedrooms, 1.5 baths with updated walk-in shower, covered rear porch, and built-in storage throughout. Full basement w/ laundry, forced air heat, walk-out access, well and septic. Parcel #2801603. Half year taxes are \$919.27. Home is ready for your primping and sprucing.

NOTE: Well-maintained property in a convenient country setting with loads to offer. Make sure you check this property out!

TERMS ON REAL ESTATE: 10% down auction day, balance due at closing. A 10% buyer's premium will be added to the highest bid to establish the purchase price, which goes to the seller. Any desired inspections must be made prior to bidding. All information contained herein was derived from sources believed to be correct. Information is believed to be accurate but not guaranteed.

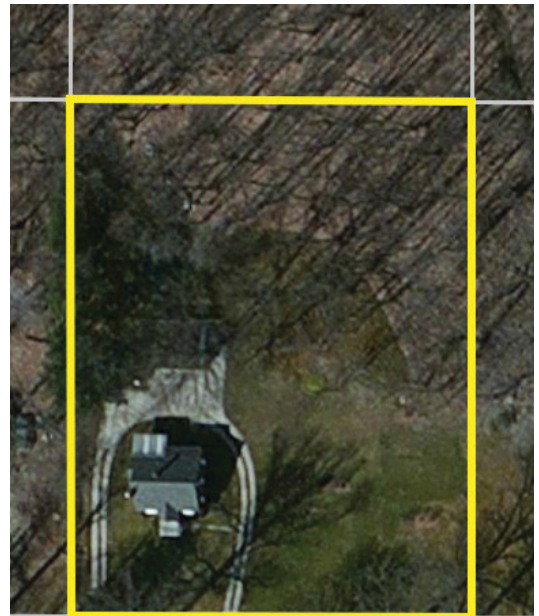
AUTO: Like-new 2015 KIA Optima EX-GDI 4-dr. sedan with only 3,298 miles, leather interior, p/w, p/l, dual temp control, CD/MP3 player, hands-free calling, keyless entry

TOOLS: Craftsman 4000 18.5 HP riding mower, Troy-Bilt pony tiller, C/H air compressor, ladders, yard tools, toolboxes, hardware, etc.

FURNITURE AND COLLECTIBLES: Early store display cabinet, 4-pc "Sumter" bedroom suite, blonde bedroom suite, blanket chest, console sewing machine, washstand, doll house, two 3-cushion sofas, lamps, end stands, lamp tables, slat top trunk, leather chair, 3-pc. dining room suite, spool cabinet, linens, bedding, pots and pans, books, buttons, sewing items, typewriter, mixer, bottles, fans, Singer sewing machine, Eden-Pure heater, turn-table, games, canes, records, cameras, wall clocks, TV, bikes, fishing poles, wooden bench, lockers, window A/C unit, Kirby sweeper, and much more

TERMS ON CHATELS: Driver's license or State ID required to register for bidder number. Cash, Check, Debit Card, Visa, or Master Card accepted. 4% buyer's premium on all sales; 4% waived for cash or check. Information is believed to be accurate but not guaranteed.

AUCTIONEER/REALTOR: Eric Bevington, 330-417-5471 or eric@kikocompany.com



Maryland Ave. Maryland S

All measurements are approximate and are subject to actual survey



330.455.9357 • kikoauctions.com

